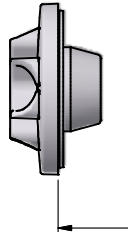


MODEL (1 : 4)



2-OUTLET



MINIMUM CLEARANCE
 FOR ELEMENT REMOVAL

700mm



1-INLET

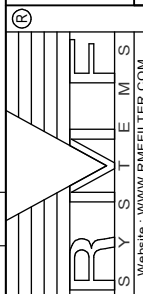
160
 131
 83
 83

710

50

Pos	Qty	Description	Size	Material	Remarks
2	2	OUTLET	G1/2" - BSP		Female
1	1	INLET	G1/4" - BSP		Female

Website : WWW.RMFFILTER.COM Designed by M.W. Designed date 13-11-2008 Design state WorkInProgress Checked by Checked date PROJECTION DIMENSIONAL TOLERANCE ACCORDING TO ISO 2768HI / NEN 2285 SCALE : 1:1		Revision Date Description DOCUMENT TITLE RMF FILTERUNIT BPU1B30HB000 RMF-BY PASS UNIT	
ARTICLE NUMBER 9317538		DRAWING NUMBER A3--9-294-12301	
REVISION		REVISION	



A 8
 B 7
 C 6
 D 5
 E 4
 F 3
 2
 1

A 8
 B 7
 C 6
 D 5
 E 4
 F 3
 2
 1